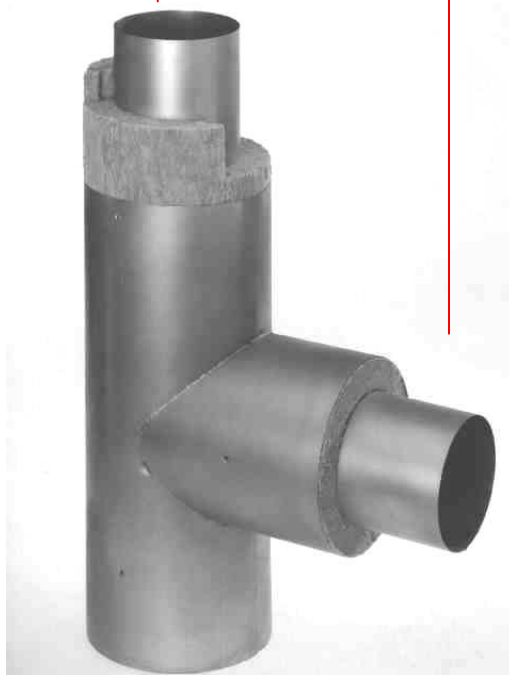


ROCKWOOL®

SCHMELZPUNKT
> 1000 °C

D Ä M M T P E R F E K T & B R E N N T N I C H T

DATA SHEET



**SPANNED CHIMNEY
PIPE
RSG**

Data sheet 12/ 2008

**ORIGINAL EQUIPMENT
MANUFACTURING 4.402.3**



PRODUCT DESCRIPTION

Spanned stone wool pipe for insulation of three shelly house chimneys with movable inner shell.

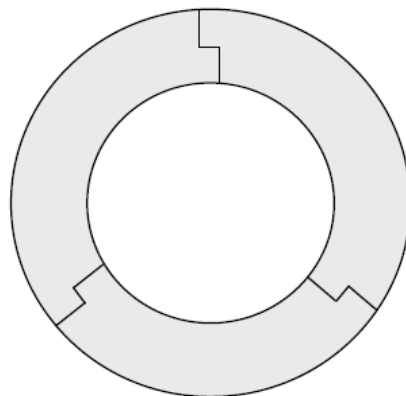
The RSG is:

- non-combustible
- thermally insulating
- dimensionally stable
- high temperature resistant
- quick and easy to handle
- with high limit of accuracy
- space saving storage

SPANNED CHIMNEY PIPE RSG

DELIVERY PROGRAM

| | |
|----------------|-------------------------------------|
| Thickness (mm) | 15 – 200 possible in 1 mm steps |
| Diameter (mm) | 20 – 1000 possible in 1 mm steps |
| Length (mm) | Standard dimension: 1000 |



TECHNICAL DATA

| | Symbol | Description/ Data | Standard/ Regulation |
|---|---|--------------------------------------|-------------------------|
| Fire performance | A1 | Fire resistance class | DIN 4102-1 |
| Temperature performance | | melting point of stone wool >1000 °C | DIN 4102-17 |
| Nominal value of thermal conductivity | $\lambda_D (50\text{ °C}, 100\text{ kg/m}^3)$ | 0,039 W/(mK) | DIN 52613 |
| Resistance factor of water vapour diffusion | MU 1 | $\mu = 1$ | DIN EN 12086 |
| Specific heat capacity | C_p | 0,84 kJ/ (kgK) | |

APPLICATION

RSG spanned stone wool pipes are used as insulation of stainless steel flue gas systems. The high limit of accuracy related to the inner and outer diameter offers advantages at object time.

Because of the segmentation the RSG pipes can be transported and stored in a space saving way.

Our technical information reflects the state of our know-how and experience at the moment of printing. For this reason please always use the latest version of this data sheet as our state of experience and know-how is constantly developing. Please contact us in any case of doubt. Examples of application described in this sheet cannot take into account special conditions of individual applications and are therefore given without any liability. Our business relationship with you is always based on the latest version of our General Terms of Sale, Delivery and Payment which we would like to send you on request.

DEUTSCHE ROCKWOOL
MINERALWOLL
GMBH & Co. OHG
P. O. Box 207
D-45952 Gladbeck
Telefon: 02043/408-408
Telefax: 02043/408-401
www.rockwool.de